

**Women's Health Goulburn North East**

# **Services Offered**



**WOMEN'S  
HEALTH**  
Goulburn North East





Women's Health Goulburn North East acknowledges the wisdom, living culture and connection of the Traditional Custodians of the lands on which we work, and the profound disruption of colonisation and the Stolen Generations on Aboriginal and Torres Strait Islander peoples. We believe in a shared and just cultural transformation that embraces diversity. These ethical principles guide our work and conduct. Always was, always will be.

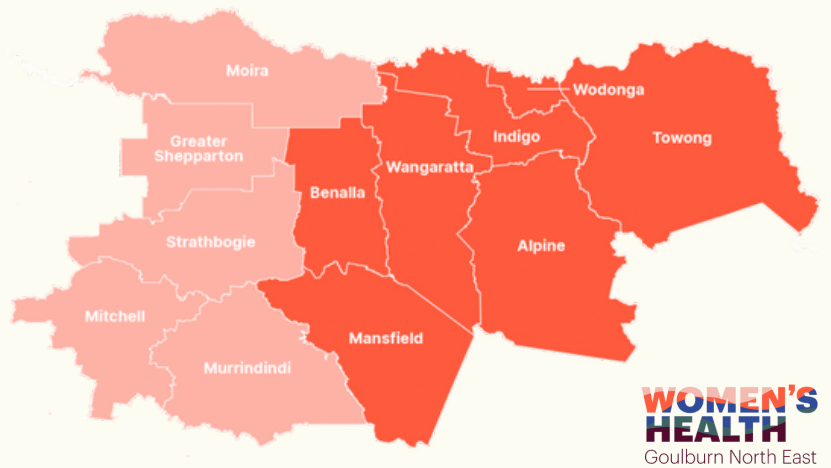
**WOMEN'S  
HEALTH**  
Goulburn North East



# Women's Health

## Goulburn North East

Women's Health Goulburn North East (WHGNE) is a non-profit organisation working across northeast Victoria and the Goulburn Valley (GV) to promote and pursue optimal health and wellbeing outcomes for women\* living and working in these rural and regional communities.



### What do we do at WHGNE?

- ◆ **Gender equity - facilitating change**
- ◆ **Gathering the evidence - research and engagement**
- ◆ **Health promotion - prevention, advocacy and collaboration**
- ◆ **We focus on gender justice, prevention of gendered violence, sexual and reproductive health rights, mental health and women in a changing climate**

\*WHGNE takes a gender inclusive approach to its work and its advocacy for women encompasses anyone who identifies as a woman as well as gender-non binary people

# Examples of the work we do at WHGNE

## ◆ **Long Story Short:**

Reshaping the narrative of women's sexual and reproductive health

## ◆ **Regions reIMAGINED**

## ◆ **Women Gathering**

## ◆ **Gendered data and planning resource**

## ◆ **Care through Disaster**

## ◆ **The GAD POD, (now Gender and Disaster Australia)**



In addition to participating in influential national research, we are in a unique position to provide a local perspective on research created on the national and international stages, contextualising this work and translating it into action that is relevant to our own communities.





# Who we work with

**We believe in the potential of communities and individuals to drive change and collaborate with stakeholders committed to working towards gender equity, such as:**

- ◆ Defined entities under the Gender Equality Act
- ◆ Government departments
- ◆ Local government
- ◆ Schools and educational institutions
- ◆ Sporting clubs
- ◆ Community groups
- ◆ Public utilities and semi-government organisations
- ◆ Hospitals and community health services
- ◆ Emergency services departments
- ◆ Service clubs
- ◆ Small businesses and industry bodies
- ◆ Chambers of commerce
- ◆ Volunteer organisations
- ◆ Any other organisation which might benefit from our services



# Services Offered

Our experienced staff bring local knowledge to gender equity and shared learning.

- ◆ **eLearning**
- ◆ **Information and practical tools**
- ◆ **Tailored training**  
Workshops, consulting & coaching and facilitated conversations
- ◆ **Partnership pathways**
- ◆ **Gender Equity Community of Practice**



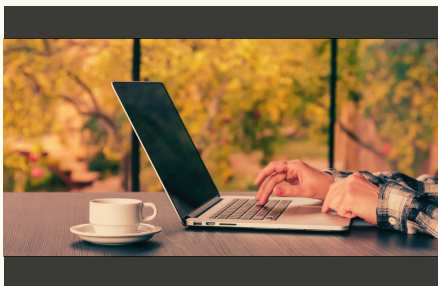


# eLearning

---

WHGNE eLearning is an online learning platform full of capacity building content and interactive courses, designed to support self-directed learning. Our platform hosts a range of full-length and bite-sized courses for varied stages of learning readiness, exploring topics, such as:

- ◆ **Understanding gender equity, prevention and intersectional practice**
- ◆ **Support for conducting Gender Impact Assessments (GIAs)**
- ◆ **Bystander action capacity building**
- ◆ **Digital inclusion and digital literacy**
- ◆ **Cultural safety; diversity and inclusion**



*View the full catalogue of courses and see what's new by visiting our website:*





# Practical tools

We have built a suite of practical tools that you can use to start, build on and further develop gender equity practices in your organisation

- ✦ **Understanding and implementing the Gender Equality Act**
  - ✦ **Arts and gender equity (Partnering for Impact)**
  - ✦ **Gendered data and planning for Local Government (Snapshots)**
  - ✦ **Using a health promotion framework using an Aboriginal lens (Making Two Worlds Work)**
  - ✦ **Growing a strong network of women (Women Gathering)**
  - ✦ **Understanding how gender influences the impact of disaster (Gender and Disaster)**
- ...more**



# Tailored training

- ✦ **Consultation & coaching**
- ✦ **Facilitated conversations**

WHNGE is experienced at working with organisations to review and develop practices through a gendered lens.

We work in partnership with organisations, as well as speak at forums, events and meetings.

WHGNE can offer guidance and support for organisations in meeting their obligations under the Victorian Gender Equality Act 2020.

Facilitated conversations and workshops will be tailored to organisational needs.



# Partnering Pathways

- ◆ Gender Equity Pathway
- ◆ Regional collaborations
- ◆ Ask about partnering with WHGNE

WHGNE values regional partnerships that foster collaboration and shared work to embed gender equity.





# Gender Equity

## Community of Practice

---

WHGNE offers a quarterly Community of Practice (CoP), focusing on shared learning and a tailored, regionally-based approach to gender equity.

The Gender Equity CoP is a space for people engaged in community, local government and health-based work in the Goulburn Valley and northeast Victoria to network, collaborate and learn together. Join via our website.





# WHGNE Services

## Rates

For more information about our services go to [whealth.com.au/services](http://whealth.com.au/services)

- ◆ **Information sessions and guest speaking**  
10-20 minutes Free
  
- ◆ **Resources available for use on our website**  
Free from [whealth.com.au/resources](http://whealth.com.au/resources)
  
- ◆ **Consulting and coaching**  
Free, depending on the scope of consultation/coaching. A reasonable fee will be established for ongoing, dedicated consulting and coaching
  
- ◆ **Workshops and facilitated conversations\***  
(In person or online - please note that some sessions will require two staff members)  
Full day, 3-6 hours \$1,600 per facilitator  
Standard rate \$220 per hour
  
- ◆ **WHGNE e-Learning**  
Awareness level courses Free  
Knowledge building courses \$60  
Skills building courses \$120  
Bulk enrolments (20-50) 10% discount  
Bulk enrolments (50+) 20% discount

Ask us about hosting [WHGNE e-Learning](#) courses on your own learning management system. SCORM files available for purchase on request.

\*Additional costs charged separately including travel mileage and time, accommodation and meals. All prices shown on this page exclude GST.